

\$340,000 - 1802 11 Avenue N, Lethbridge

MLS® #A2238150

\$340,000

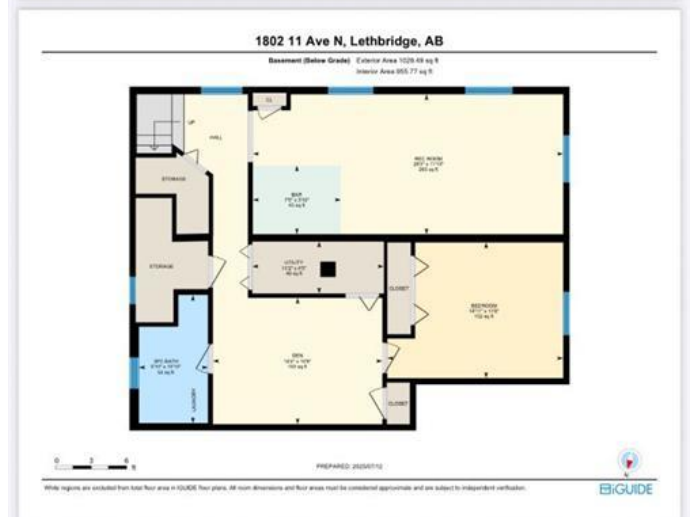
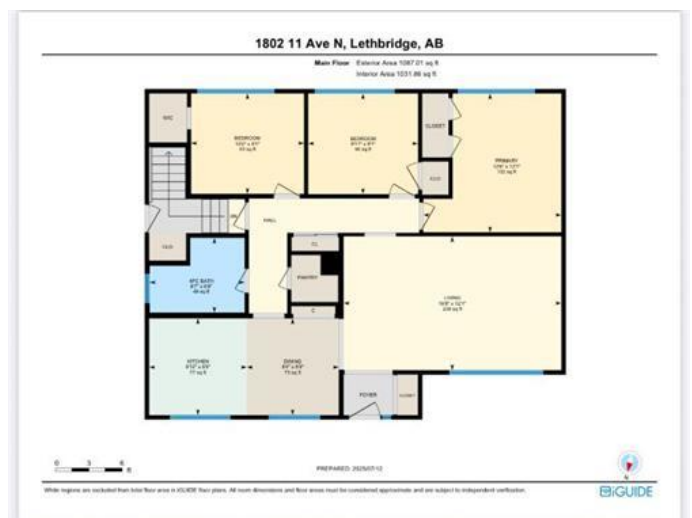
4 Bedroom, 2.00 Bathroom, 1,087 sqft
Residential on 0.16 Acres

Winston Churchill, Lethbridge, Alberta

Great house to make an offer on to flip or build equity in the potential value. In the WINSTON CHURCHILL NEIGHBOURHOOD. Original character and timeless charm, with hardwood floors, 3 bedrooms on main floor, fully developed basement with great possibilities, this bungalow offers the perfect space for a family or the opportunity to develop into separate suite with it's own entrance. Offering 2 full bathrooms, wet bar in basement family room, the living room and family room of this home has the perfect layout. Exterior has a CAR PORT, ATTACHED GARAGE, LARGE YARD FOR GARDEN with mature raspberry bushes, OR EXTRA PARKING. This home has great bones for someone looking to add their personal touch or redevelopment. Situated in a quiet, well established neighbourhood WALKING DISTANCE to NORD-BRIDGE SENIORS CENTER, 3 LEVELS OF SCHOOLS, GALBRAITH ELEMENTARY, WILSON MIDDLE SCHOOL, WINSTON CHURCHILL HIGH. On a 6817 sq. ft. corner lot close to other amenities like PARKS, WALKING TRAILS & PUBLIC TRANSIT. Don't wait on this potential family home or INVESTMENT PROPERTY corner lot for development and hot water boiler, for ZONE HEATING.

Built in 1959

Essential Information



| | |
|----------------|-------------|
| MLS® # | A2238150 |
| Price | \$340,000 |
| Bedrooms | 4 |
| Bathrooms | 2.00 |
| Full Baths | 2 |
| Square Footage | 1,087 |
| Acres | 0.16 |
| Year Built | 1959 |
| Type | Residential |
| Sub-Type | Detached |
| Style | Bungalow |
| Status | Active |

Community Information

| | |
|-------------|-------------------|
| Address | 1802 11 Avenue N |
| Subdivision | Winston Churchill |
| City | Lethbridge |
| County | Lethbridge |
| Province | Alberta |
| Postal Code | T1H 1N2 |

Amenities

| | |
|----------------|--|
| Parking Spaces | 4 |
| Parking | Attached Carport, Single Garage Attached |
| # of Garages | 1 |

Interior

| | |
|-------------------|--|
| Interior Features | Built-in Features |
| Appliances | Electric Stove, Refrigerator, Washer/Dryer, Range Hood |
| Heating | Boiler, Hot Water |
| Cooling | None |
| Has Basement | Yes |
| Basement | Full, Finished |

Exterior

| | |
|-------------------|-----------------------|
| Exterior Features | Garden |
| Lot Description | Back Yard, Corner Lot |
| Roof | Asphalt Shingle |
| Construction | Wood Siding |

Foundation Poured Concrete

Additional Information

Date Listed July 12th, 2025

Days on Market 91

Zoning R-L

Listing Details

Listing Office SUTTON GROUP - LETHBRID



Data is supplied by Pillar 9â„¢ MLSÂ® System. Pillar 9â„¢ is the owner of the copyright in its MLSÂ® System. Data is deemed reliable but is not guaranteed accurate by Pillar 9â„¢. The trademarks MLSÂ®, Multiple Listing ServiceÂ® and the associated logos are owned by The Canadian Real Estate Association (CREA) and identify the quality of services provided by real estate professionals who are members of CREA. Used under license.