

# \$999,999 - 204050 Rr 245, Rural Vulcan County

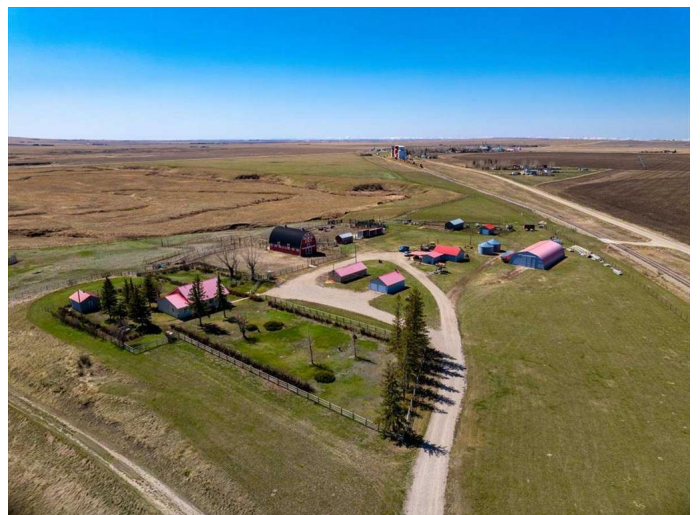
MLS® #A2238687

**\$999,999**

2 Bedroom, 1.00 Bathroom, 1,515 sqft  
Residential on 12.50 Acres

NONE, Rural Vulcan County, Alberta

Acreage living 12.5 acres conveniently located on the east side of Mossleigh. As you drive in the pride of ownership is evident throughout you will be wowed the driveway leads up to the home. When you step in you will enjoy a large mud room complete with a wash sink and built in cabinets. Step in and be amazed by the custom kitchen that was just redone! Stunning vinyl plank flooring through out. Step in a bit further and enjoy your dining room that leads to a beautiful sunroom that has stunning views!! 2 bedrooms and a 4 piece bath are also conveniently located on this level. Some other upgrades include but not limited to a brand new Culligan water system, brand new furnace and hot water tank. Plenty of storage is through out this house as well. 2 artesian wells mean plenty of water as well!! Step outside and you will be welcomed by double car garage with a metal roof and siding as well as 2 overhead doors. The chicken coop is an oasis for your feathered friends, could be used as a dog run or a green house as well as it has plenty of south facing windows. The barn is to live for as well and has been lovingly restored with 100 year rubber shingles, fresh paint, new windows, boards and new doors. Inside is 6 box stalls and 3 tie stalls, the loft is complete with hardwood floors and would make a stunning dance hall with some upgrades. The new corrals with rail fences are also a bonus!! And we aren't done with the tour as there is a 24x36 shop with a 11x12 heated area. A 40x80 Quonset with new doors and hardy



board siding. Clients are open to subdividing the property if you only want the acreage. This property has a little something for everyone and truly must be seen to be appreciated!!

Built in 1934

### **Essential Information**

MLS® #	A2238687
Price	\$999,999
Bedrooms	2
Bathrooms	1.00
Full Baths	1
Square Footage	1,515
Acres	12.50
Year Built	1934
Type	Residential
Sub-Type	Detached
Style	Acreage with Residence, A-Frame
Status	Active

### **Community Information**

Address	204050 Rr 245
Subdivision	NONE
City	Rural Vulcan County
County	Vulcan County
Province	Alberta
Postal Code	T0L1P0

### **Amenities**

Parking	Double Garage Detached
# of Garages	2

### **Interior**

Interior Features	Built-in Features, High Ceilings, Laminate Counters, Open Floorplan
Appliances	Dishwasher, Dryer, Refrigerator, Washer, Window Coverings, Water Conditioner
Heating	Forced Air

Cooling	None
Has Basement	Yes
Basement	Full, Unfinished

### **Exterior**

Exterior Features	Private Entrance, Private Yard
Lot Description	Back Yard, Few Trees, Gentle Sloping, Level, No Neighbours Behind, Views, Creek/River/Stream/Pond, Farm, Pasture
Roof	Metal
Construction	Stucco, Vinyl Siding
Foundation	Poured Concrete

### **Additional Information**

Date Listed	July 10th, 2025
Days on Market	91
Zoning	AG

### **Listing Details**

Listing Office	Century 21 Foothills Real Estate
----------------	----------------------------------

Data is supplied by Pillar 9â„¢ MLSÂ® System. Pillar 9â„¢ is the owner of the copyright in its MLSÂ® System. Data is deemed reliable but is not guaranteed accurate by Pillar 9â„¢. The trademarks MLSÂ®, Multiple Listing ServiceÂ® and the associated logos are owned by The Canadian Real Estate Association (CREA) and identify the quality of services provided by real estate professionals who are members of CREA. Used under license.