

\$324,900 - 14, 73 Addington Drive, Red Deer

MLS® #A2244464

\$324,900

2 Bedroom, 3.00 Bathroom, 1,223 sqft

Residential on 0.04 Acres

Aspen Ridge, Red Deer, Alberta

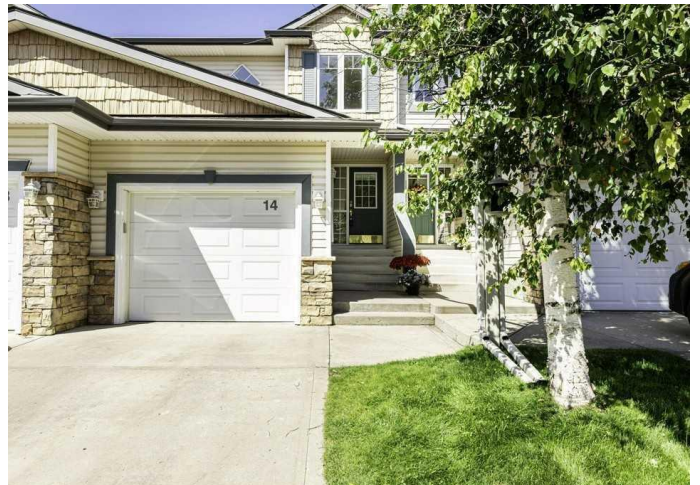
IMMACULATE TOWNHOUSE IN ASPEN RIDGE – SHOWS LIKE NEW!

This stunning 2-storey townhouse has undergone extensive renovations and offers stylish, low-maintenance living with immediate possession available! Featuring a single attached garage, central A/C, and a walk-out basement, this move-in-ready home is packed with upgrades.

Step inside to discover brand-new luxury vinyl plank flooring, fresh paint, updated trim and baseboards, and modern light fixtures and hardware that elevate the home's contemporary feel. The bright and spacious main floor boasts an open-concept layout, complete with a cozy gas fireplace, a garden door to the deck, and a generous dining area – perfect for entertaining. The kitchen shines with new stainless steel appliances, a new sink and faucet, and ample cabinetry. A convenient 2-piece renovated bathroom completes the main floor.

Upstairs, you'll find two generous primary bedrooms, each with walk-in closets and fully renovated 4-piece ensuites featuring new vanities, toilets, and fixtures. Additional highlights include upgraded railings, some new interior doors, vent covers, and smoke/CO2 detectors.

The undeveloped walk-out basement offers endless potential for future development, along with a dedicated laundry area (washer and dryer included) and a utility/storage room. The furnace and ducts have been



professionally cleaned, and the central air conditioner was recently serviced. Located close to schools, parks, transit, and shopping. Two pets under 30 lbs. are allowed with board approval. Condo fee - \$410.00 per month. This beautifully updated home truly shows awesome â€”donâ€™t miss your chance to make it yours!

Built in 2000

Essential Information

| | |
|----------------|-------------------|
| MLS® # | A2244464 |
| Price | \$324,900 |
| Bedrooms | 2 |
| Bathrooms | 3.00 |
| Full Baths | 2 |
| Half Baths | 1 |
| Square Footage | 1,223 |
| Acres | 0.04 |
| Year Built | 2000 |
| Type | Residential |
| Sub-Type | Row/Townhouse |
| Style | 2 Storey, Up/Down |
| Status | Active |

Community Information

| | |
|-------------|------------------------|
| Address | 14, 73 Addington Drive |
| Subdivision | Aspen Ridge |
| City | Red Deer |
| County | Red Deer |
| Province | Alberta |
| Postal Code | T4R 2Z6 |

Amenities

| | |
|----------------|--------------------------------------|
| Amenities | Visitor Parking |
| Parking Spaces | 2 |
| Parking | Alley Access, Single Garage Attached |
| # of Garages | 1 |

Interior

| | |
|-------------------|---|
| Interior Features | Open Floorplan, Storage, Vinyl Windows |
| Appliances | Central Air Conditioner, Dishwasher, Electric Stove, Garage Control(s), Microwave, Refrigerator, Washer/Dryer |
| Heating | Forced Air, Natural Gas |
| Cooling | Central Air |
| Fireplace | Yes |
| # of Fireplaces | 1 |
| Fireplaces | Gas, Living Room, Mantle, Tile |
| Has Basement | Yes |
| Basement | Full, Unfinished, Walk-Out |

Exterior

| | |
|-------------------|--|
| Exterior Features | Lighting |
| Lot Description | Back Yard, Front Yard, Standard Shaped Lot |
| Roof | Asphalt Shingle |
| Construction | Vinyl Siding, Wood Frame |
| Foundation | Poured Concrete |

Additional Information

| | |
|----------------|-----------------|
| Date Listed | July 30th, 2025 |
| Days on Market | 25 |
| Zoning | R-M |

Listing Details

| | |
|----------------|------------------------------------|
| Listing Office | RE/MAX real estate central alberta |
|----------------|------------------------------------|

Data is supplied by Pillar 9â„¢ MLS® System. Pillar 9â„¢ is the owner of the copyright in its MLS® System. Data is deemed reliable but is not guaranteed accurate by Pillar 9â„¢. The trademarks MLS®, Multiple Listing Service® and the associated logos are owned by The Canadian Real Estate Association (CREA) and identify the quality of services provided by real estate professionals who are members of CREA. Used under license.