

\$22 - 11650 Elbow Drive Sw, Calgary

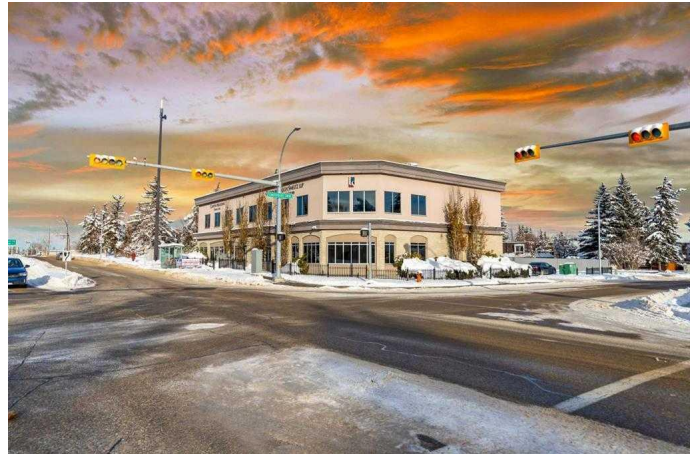
MLS® #A2245912

\$22

0 Bedroom, 0.00 Bathroom,
Commercial on 0.00 Acres

Canyon Meadows, Calgary, Alberta

Great opportunity to lease 2,745+/- sqft office space in a well-maintained professional building. Currently the building is home to a dental clinic, family medical clinic and a pharmacy making it an ideal location for medical related businesses such. This space is well-suited for medical professionals



Built in 2010

Essential Information

| | |
|------------|------------|
| MLS® # | A2245912 |
| Price | \$22 |
| Bathrooms | 0.00 |
| Acres | 0.00 |
| Year Built | 2010 |
| Type | Commercial |
| Sub-Type | Office |
| Status | Active |

Community Information

| | |
|-------------|----------------------|
| Address | 11650 Elbow Drive Sw |
| Subdivision | Canyon Meadows |
| City | Calgary |
| County | Calgary |
| Province | Alberta |
| Postal Code | T2W1S8 |

Additional Information

| | |
|-------------|-------------------|
| Date Listed | August 23rd, 2025 |
|-------------|-------------------|

| | |
|----------------|------|
| Days on Market | 49 |
| Zoning | C-C1 |

Listing Details

| | |
|----------------|-----------------------|
| Listing Office | Royal LePage Blue Sky |
|----------------|-----------------------|

Data is supplied by Pillar 9â„¢ MLS® System. Pillar 9â„¢ is the owner of the copyright in its MLS® System. Data is deemed reliable but is not guaranteed accurate by Pillar 9â„¢. The trademarks MLS®, Multiple Listing Service® and the associated logos are owned by The Canadian Real Estate Association (CREA) and identify the quality of services provided by real estate professionals who are members of CREA. Used under license.