

\$169,900 - 4447 Park Crescent, Coronation

MLS® #A2250308

\$169,900

3 Bedroom, 2.00 Bathroom, 1,484 sqft

Residential on 0.13 Acres

NONE, Coronation, Alberta

Step inside this beautifully updated 1,483 sq.ft. mobile home and discover comfort, style, and space in perfect harmony. Everything here is new or newer – from the central air and upgraded windows to the modern light fixtures and gorgeous vinyl plank flooring throughout.

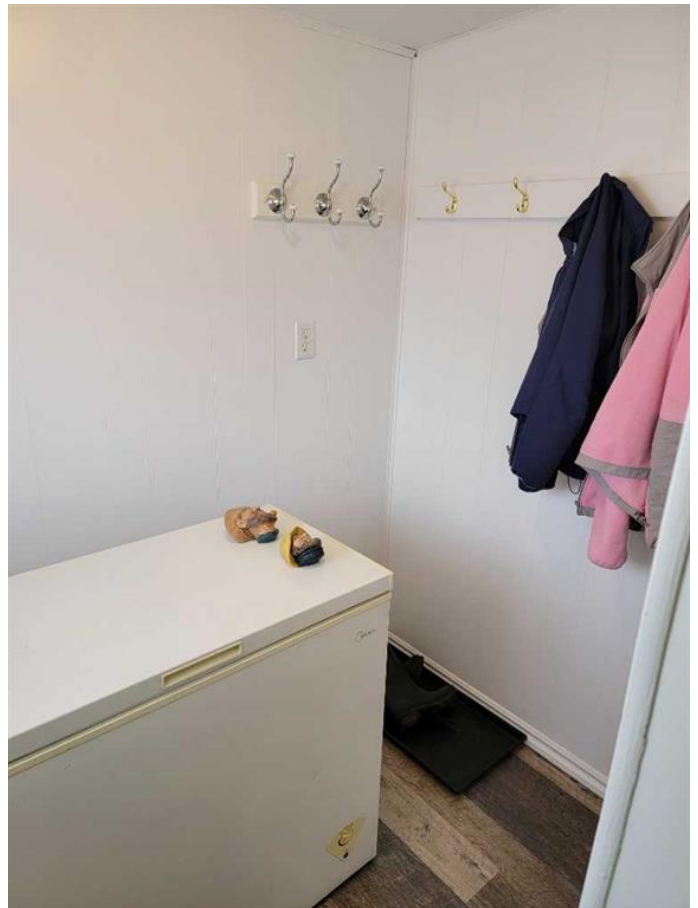
Freshly painted in a welcoming palette, the open layout features 3 spacious bedrooms, 2 full bathrooms, vaulted ceilings, huge sky lite in the kitchen, this is an affordable home with room for everyone. The fully fenced yard is your private retreat, complete with a large fenced-in garden, cozy fire pit, and a huge two-story shed for all your storage or hobby needs. The extended single garage offers plenty of room for parking and includes a dedicated workshop area.

All the work has been done – just unpack and enjoy. This home truly must be seen to be appreciated.

Built in 1992

Essential Information

MLS® #	A2250308
Price	\$169,900
Bedrooms	3
Bathrooms	2.00
Full Baths	2
Square Footage	1,484
Acres	0.13



Year Built	1992
Type	Residential
Sub-Type	Detached
Style	Single Wide Mobile Home
Status	Active

Community Information

Address	4447 Park Crescent
Subdivision	NONE
City	Coronation
County	Paintearth No. 18, County of
Province	Alberta
Postal Code	T0C 1C0

Amenities

Parking Spaces	4
Parking	Parking Pad, Single Garage Attached
# of Garages	2

Interior

Interior Features	Bookcases, Built-in Features, High Ceilings, Open Floorplan, Soaking Tub, Vaulted Ceiling(s), Vinyl Windows, Skylight(s)
Appliances	Central Air Conditioner, Dishwasher, Microwave, Refrigerator, Stove(s), Washer/Dryer, Window Coverings
Heating	Forced Air, Natural Gas
Cooling	Central Air
Fireplace	Yes
# of Fireplaces	1
Fireplaces	Decorative, Electric, Kitchen
Basement	None

Exterior

Exterior Features	Fire Pit, Garden, Private Yard
Lot Description	Back Yard, Fruit Trees/Shrub(s), Landscaped, Lawn, Private, Garden
Roof	Asphalt Shingle
Construction	Vinyl Siding, Wood Frame
Foundation	Piling(s)

Additional Information

Date Listed August 19th, 2025

Days on Market 1

Zoning R1

Listing Details

Listing Office eXp Realty



Data is supplied by Pillar 9â„¢ MLS® System. Pillar 9â„¢ is the owner of the copyright in its MLS® System. Data is deemed reliable but is not guaranteed accurate by Pillar 9â„¢. The trademarks MLS®, Multiple Listing Service® and the associated logos are owned by The Canadian Real Estate Association (CREA) and identify the quality of services provided by real estate professionals who are members of CREA. Used under license.