

# \$334,900 - 23 Lark Close, Sylvan Lake

MLS® #A2252418

## \$334,900

3 Bedroom, 3.00 Bathroom, 1,415 sqft  
Residential on 0.05 Acres

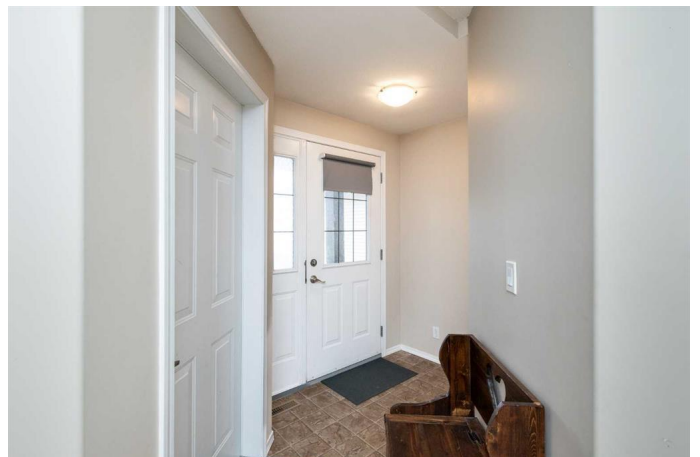
Lakeway Landing, Sylvan Lake, Alberta

**NO CONDO FEES!** This move-in-ready immediate possession home in Lakeway Landing offers 3 bedrooms, 2.5 bathrooms, and a functional open-concept layout perfect for families, first-time buyers, or investors. The spacious kitchen features ample cabinets and plenty of counter space. The bright living room opens through patio doors to a nice private double deck and an maintenance free yard—ideal for kids, BBQs, and entertaining. Upstairs, the generous primary bedroom includes a private 3-piece ensuite, while two additional bedrooms and a 4-piece bath provide plenty of space for family or guests. The unfinished basement is ready for your ideas and adds excellent potential for future development. Nestled in a quiet cul-de-sac close to schools, parks, and walking paths, this property combines comfort, convenience, and outdoor space that's hard to beat.

Built in 2004

## Essential Information

MLS® #	A2252418
Price	\$334,900
Bedrooms	3
Bathrooms	3.00
Full Baths	2
Half Baths	1
Square Footage	1,415
Acres	0.05



Year Built	2004
Type	Residential
Sub-Type	Row/Townhouse
Style	2 Storey
Status	Active

### Community Information

Address	23 Lark Close
Subdivision	Lakeway Landing
City	Sylvan Lake
County	Red Deer County
Province	Alberta
Postal Code	T4S 2P6

### Amenities

Parking Spaces	2
Parking	Single Garage Attached
# of Garages	1

### Interior

Interior Features	Laminate Counters, Pantry
Appliances	Dishwasher, Electric Stove, Refrigerator, Washer/Dryer
Heating	Forced Air
Cooling	None
Has Basement	Yes
Basement	Full, Unfinished

### Exterior

Exterior Features	None
Lot Description	Back Lane, Back Yard
Roof	Asphalt Shingle
Construction	Vinyl Siding
Foundation	Poured Concrete

### Additional Information

Date Listed	September 4th, 2025
Days on Market	39
Zoning	R3

### Listing Details

Listing Office

RE/MAX real estate central alberta

Data is supplied by Pillar 9â„¢ MLSÂ® System. Pillar 9â„¢ is the owner of the copyright in its MLSÂ® System. Data is deemed reliable but is not guaranteed accurate by Pillar 9â„¢. The trademarks MLSÂ®, Multiple Listing ServiceÂ® and the associated logos are owned by The Canadian Real Estate Association (CREA) and identify the quality of services provided by real estate professionals who are members of CREA. Used under license.