

\$335,000 - 1210 6 Avenue S, Lethbridge

MLS® #A2256298

\$335,000

4 Bedroom, 1.00 Bathroom, 1,567 sqft

Residential on 0.12 Acres

London Road, Lethbridge, Alberta

This 1.5 storey, 1567 square foot home has the location, size and proximity to fulfill your personal and professional needs.

MAIN LEVEL: 10 foot ceilings, original 10 inch baseboards and original stained glass features. Spacious design throughout the living room, dining room, bedroom, laundry room, modern kitchen and renovated 4 piece bathroom.

UPSTAIRS: Large landing area which branches out into 3 bedrooms, each accented by enchanting window and ceiling design.

BACKYARD: An abundance of space and privacy. A large deck, lawn and garden beds, sheltered by mature trees and greenery. An oversized single car garage and private 2+ vehicle off street parking pad.

A SHORT WALK TO:

Groceries (3 min.),

Parks and greenspaces (3 min.),

Fresh food and coffee (2 min.),

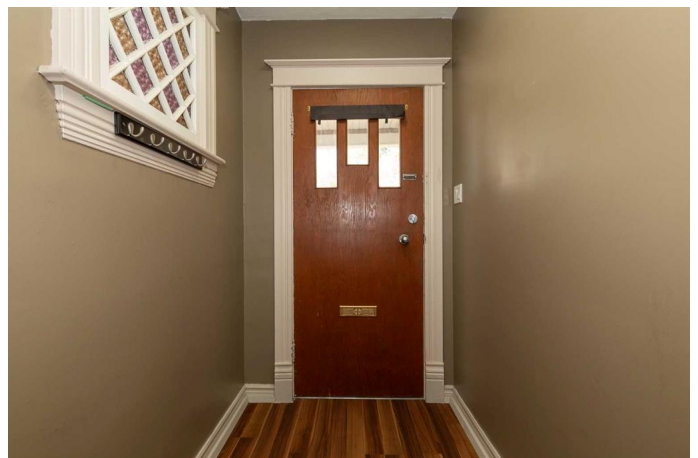
K-12 schooling (10-15 min.),

LSCO (6 min.),

Daycare (2 min.),

City center terminal (10 min.),

or the Downtown core (10 min.) for your



various other needs.

Contact your real estate agent to schedule your private viewing.

Built in 1908

Essential Information

| | |
|----------------|-------------|
| MLS® # | A2256298 |
| Price | \$335,000 |
| Bedrooms | 4 |
| Bathrooms | 1.00 |
| Full Baths | 1 |
| Square Footage | 1,567 |
| Acres | 0.12 |
| Year Built | 1908 |
| Type | Residential |
| Sub-Type | Detached |
| Style | 2 Storey |
| Status | Active |

Community Information

| | |
|-------------|-----------------|
| Address | 1210 6 Avenue S |
| Subdivision | London Road |
| City | Lethbridge |
| County | Lethbridge |
| Province | Alberta |
| Postal Code | T1J 1A4 |

Amenities

| | |
|----------------|------------------------|
| Parking Spaces | 1 |
| Parking | Single Garage Detached |
| # of Garages | 1 |

Interior

| | |
|-------------------|-------------------------|
| Interior Features | Ceiling Fan(s), Storage |
| Appliances | See Remarks |
| Heating | Forced Air |
| Cooling | None |

| | |
|-----------------|----------|
| Fireplace | Yes |
| # of Fireplaces | 1 |
| Fireplaces | Electric |
| Basement | None |

Exterior

| | |
|-------------------|--|
| Exterior Features | None |
| Lot Description | Back Yard, Landscaped, Standard Shaped Lot |
| Roof | Asphalt Shingle |
| Construction | Vinyl Siding |
| Foundation | Poured Concrete |

Additional Information

| | |
|----------------|----------------------|
| Date Listed | September 11th, 2025 |
| Days on Market | 32 |
| Zoning | R-L(L) |

Listing Details

| | |
|----------------|----------------------------|
| Listing Office | Lethbridge Real Estate.com |
|----------------|----------------------------|

Data is supplied by Pillar 9â„¢ MLS® System. Pillar 9â„¢ is the owner of the copyright in its MLS® System. Data is deemed reliable but is not guaranteed accurate by Pillar 9â„¢. The trademarks MLS®, Multiple Listing Service® and the associated logos are owned by The Canadian Real Estate Association (CREA) and identify the quality of services provided by real estate professionals who are members of CREA. Used under license.