

\$779,900 - 139 Cove Close, Chestermere

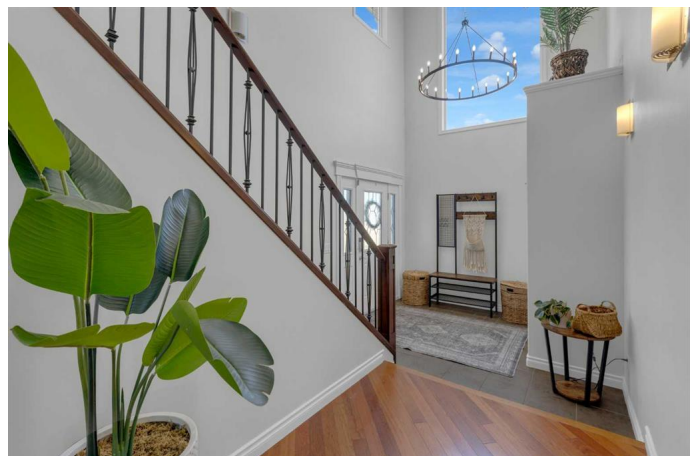
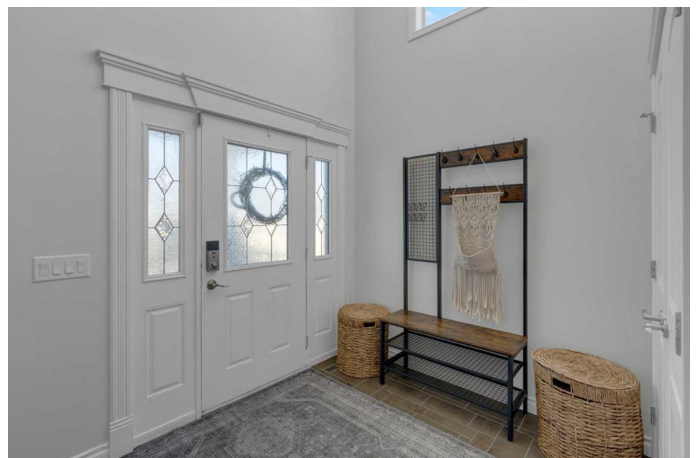
MLS® #A2258909

\$779,900

4 Bedroom, 3.00 Bathroom, 2,426 sqft
Residential on 0.14 Acres

The Cove, Chestermere, Alberta

Step into luxury living with this exceptional corner-lot residence in the highly desirable community of The Cove in Chestermere! Perfectly positioned just steps from the beach, pickleball courts, and parks, this home offers not only a beautiful place to live, but a lifestyle to match. Thoughtfully designed, the main floor welcomes you with rich hardwood flooring, a grand foyer that sets the tone, and an open-concept layout ideal for family gatherings and entertaining alike. The kitchen is a true showpiece, complete with a gas stove, an oversized island, and seamless flow into the dining and living areas. A private office, a convenient half bath, and a laundry/mudroom with garage access add both style and function. Upstairs, four generously sized bedrooms provide comfort for the whole family, complemented by a cozy bonus room and a 5-piece bath. The primary suite is a serene retreat with its own 4-piece ensuite, perfect for unwinding after a long day. Outdoor living is second to none here—relax on the elevated deck, or step down to the beautifully landscaped backyard. The undeveloped walkout basement offers endless potential to design a dream recreation space, gym, or guest suite, all with seamless access to the outdoors. Modern comforts have not been overlooked: enjoy cool summers with central air conditioning and warm, cozy winters with a heated triple car garage. Conveniently located close to schools, shopping, and major roadways, this property offers the perfect



blend of comfort, convenience, and community. With its unbeatable location, elegant design, and incredible future potential, this home is a rare find you won't want to miss!

Built in 2007

Essential Information

| | |
|----------------|-------------|
| MLS® # | A2258909 |
| Price | \$779,900 |
| Bedrooms | 4 |
| Bathrooms | 3.00 |
| Full Baths | 2 |
| Half Baths | 1 |
| Square Footage | 2,426 |
| Acres | 0.14 |
| Year Built | 2007 |
| Type | Residential |
| Sub-Type | Detached |
| Style | 2 Storey |
| Status | Active |

Community Information

| | |
|-------------|----------------|
| Address | 139 Cove Close |
| Subdivision | The Cove |
| City | Chestermere |
| County | Chestermere |
| Province | Alberta |
| Postal Code | T1X 1V4 |

Amenities

| | |
|----------------|------------------------|
| Parking Spaces | 6 |
| Parking | Triple Garage Attached |
| # of Garages | 3 |

Interior

| | |
|-------------------|---|
| Interior Features | Built-in Features, Chandelier, Kitchen Island, Open Floorplan, Pantry, Separate Entrance, Stone Counters, Walk-In Closet(s) |
|-------------------|---|

| | |
|-----------------|--|
| Appliances | Dishwasher, Dryer, Garage Control(s), Gas Stove, Microwave, Range Hood, Refrigerator, Washer, Window Coverings |
| Heating | Forced Air, Natural Gas |
| Cooling | Central Air |
| Fireplace | Yes |
| # of Fireplaces | 1 |
| Fireplaces | Gas, Mantle |
| Has Basement | Yes |
| Basement | Full, Unfinished |

Exterior

| | |
|-------------------|---|
| Exterior Features | Balcony, Garden, Private Yard, Storage |
| Lot Description | Back Yard, Corner Lot, Cul-De-Sac, Landscaped, Lawn |
| Roof | Asphalt Shingle |
| Construction | Stone, Vinyl Siding, Wood Frame |
| Foundation | Poured Concrete |

Additional Information

| | |
|----------------|----------------------|
| Date Listed | September 25th, 2025 |
| Days on Market | 14 |
| Zoning | R-1 |

Listing Details

| | |
|----------------|------------|
| Listing Office | CIR Realty |
|----------------|------------|

Data is supplied by Pillar 9â,,ç MLSÂ® System. Pillar 9â,,ç is the owner of the copyright in its MLSÂ® System. Data is deemed reliable but is not guaranteed accurate by Pillar 9â,,ç. The trademarks MLSÂ®, Multiple Listing ServiceÂ® and the associated logos are owned by The Canadian Real Estate Association (CREA) and identify the quality of services provided by real estate professionals who are members of CREA. Used under license.