

# \$499,900 - 3204, 210 15 Avenue Se, Calgary

MLS® #A2261814

**\$499,900**

2 Bedroom, 2.00 Bathroom, 965 sqft

Residential on 0.00 Acres

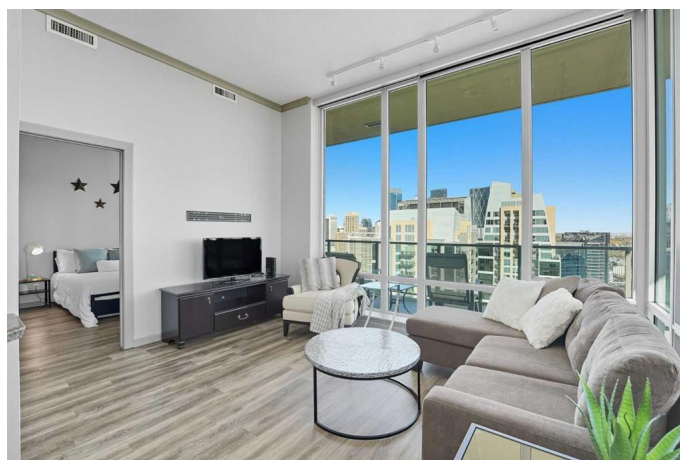
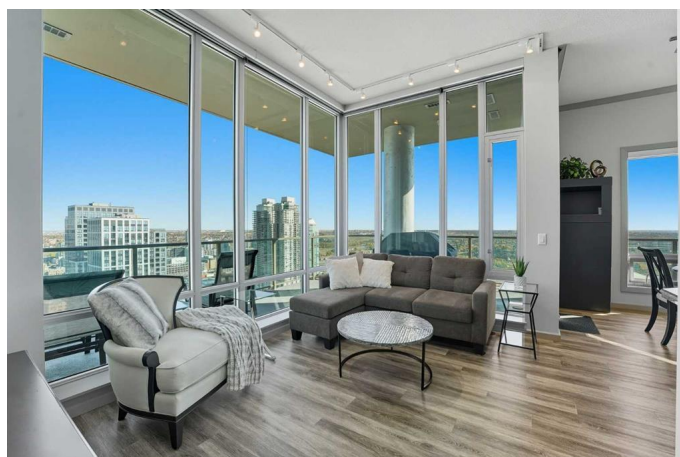
Beltline, Calgary, Alberta

Welcome to Vetro, one of Calgary's most sought-after high-rise condominiums, ideally located in the heart of the Beltline. Perched on the 32nd floor, this stunning 2-bedroom, 2-bathroom corner unit offers nearly 965 sq. ft. of modern living space with spectacular south-facing city and mountain views through floor-to-ceiling windows.

Step inside to discover a bright and open layout featuring contemporary finishes throughout. The kitchen is equipped with sleek cabinetry, stainless steel appliances, granite countertops, and a convenient breakfast bar—perfect for entertaining or casual dining. The adjoining living and dining area flows seamlessly onto a private balcony, ideal for enjoying your morning coffee or the evening skyline.

Both bedrooms are generously sized, with the primary suite offering a walk-through closet and private 4-piece ensuite. A second full bathroom, in-suite laundry, and central air conditioning add comfort and convenience to this well-designed space. Vinyl and tile flooring throughout ensure durability and style.

This property includes 2 titled underground parking stalls and an assigned storage locker. Move-in ready or an exceptional turn-key investment opportunity. The Vetro building provides an array of amenities, including a fitness centre, sauna, hot tub, social and



games rooms, and 24-hour security.

Perfectly positioned steps from Stampede Park, the LRT, restaurants, shopping, and downtown, this location blends vibrant urban living with effortless access to everything you need.

Enjoy the best of Beltline living—modern comfort, unbeatable views, and premier amenities—all from your sky-high retreat in Vetro.

Built in 2009

**Essential Information**

MLS® #	A2261814
Price	\$499,900
Bedrooms	2
Bathrooms	2.00
Full Baths	2
Square Footage	965
Acres	0.00
Year Built	2009
Type	Residential
Sub-Type	Apartment
Style	Single Level Unit
Status	Active

**Community Information**

Address	3204, 210 15 Avenue Se
Subdivision	Beltline
City	Calgary
County	Calgary
Province	Alberta
Postal Code	T2G0B5

**Amenities**

Amenities	Elevator(s), Fitness Center, Party Room, Secured Parking, Parking, Spa/Hot Tub, Storage
-----------	---

Parking Spaces	2
Parking	Heated Garage, Stall, Titled, Underground, Guest
# of Garages	2

### **Interior**

Interior Features	See Remarks
Appliances	Dishwasher, Electric Stove, Garage Control(s), Microwave Hood Fan, Refrigerator, Washer/Dryer, Window Coverings
Heating	Forced Air, Natural Gas
Cooling	Central Air
# of Stories	34

### **Exterior**

Exterior Features	Balcony
Construction	Brick, Concrete, Stucco

### **Additional Information**

Date Listed	October 7th, 2025
Days on Market	1
Zoning	DC

### **Listing Details**

Listing Office	eXp Realty
----------------	------------

Data is supplied by Pillar 9â„¢ MLS® System. Pillar 9â„¢ is the owner of the copyright in its MLS® System. Data is deemed reliable but is not guaranteed accurate by Pillar 9â„¢. The trademarks MLS®, Multiple Listing Service® and the associated logos are owned by The Canadian Real Estate Association (CREA) and identify the quality of services provided by real estate professionals who are members of CREA. Used under license.