

\$474,900 - Ne-21-2-16-w4, Rural Warner No. 5, County of

MLS® #A2261995

\$474,900

0 Bedroom, 0.00 Bathroom,
Land on 41.80 Acres

NONE, Rural Warner No. 5, County of, Alberta

FOR SALE, 41.8 ACRES DIRECTLY SOUTH OF MILK RIVER AND RIGHT NEXT TO THE FORMER VISITOR INFORMATION CENTRE. LAND IS IN HAY AND PASTURE. THERE IS A 55x110 QUONSET WITH CONCRETE FLOOR ON THE LAND . ONE OVERHEAD DOOR, ONE SLIDING DOUBLE DOOR AND ONE WALK THROUGH DOOR. WATER HYDRANT ON WEST SIDE OF QUONSET. THIS PROPERTY HAS UNLIMITED POTENTIAL. BORDERING THE MILK RIVER AND RIGHT OFF OF HIGHWAY 4. 40MINS FROM LETHBRIDGE AND 10MINS FROM COUTTS/SWEETGRASS U.S.A. PORT OF ENTRY.

Essential Information

MLS® #	A2261995
Price	\$474,900
Bathrooms	0.00
Acres	41.80
Type	Land
Sub-Type	Commercial Land
Status	Active

Community Information

Address	Ne-21-2-16-w4
Subdivision	NONE
City	Rural Warner No. 5, County of
County	Warner No. 5, County of



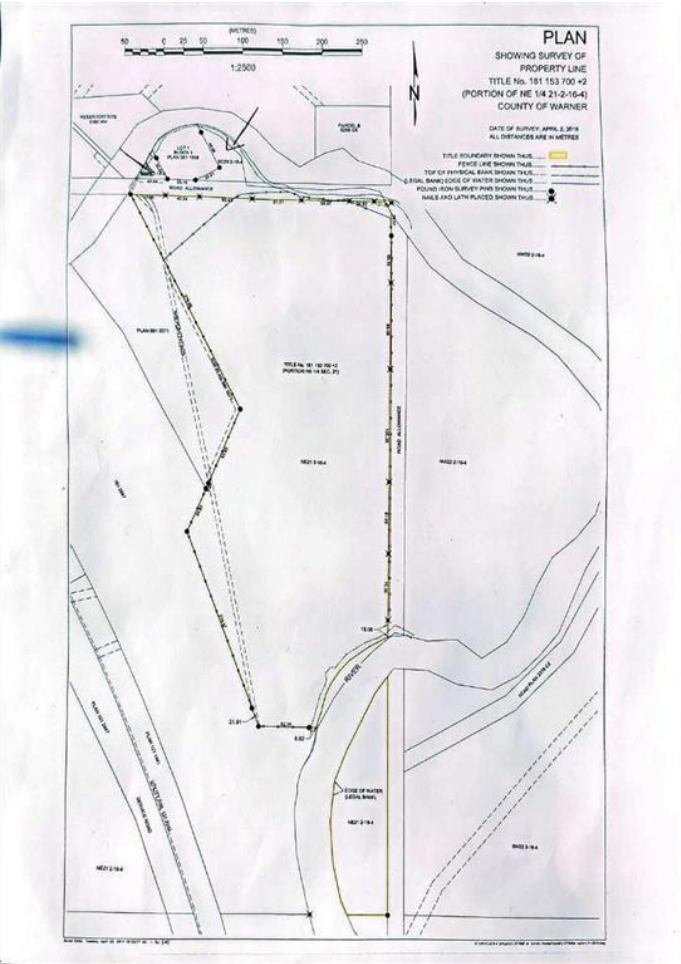
Province Alberta
Postal Code T0K1M0

Additional Information

Date Listed October 2nd, 2025
Days on Market 5
Zoning AGRICULTURAL

Listing Details

Listing Office RE/MAX REAL ESTATE - LETI



Data is supplied by Pillar 9â„¢ MLSÂ® System. Pillar 9â„¢ is the owner of the copyright in its MLSÂ® System. Data is deemed reliable but is not guaranteed accurate by Pillar 9â„¢. The trademarks MLSÂ®, Multiple Listing ServiceÂ® and the associated logos are owned by The Canadian Real Estate Association (CREA) and identify the quality of services provided by real estate professionals who are members of CREA. Used under license.

