

\$459,000 - 43 Prairie Court Ne, Medicine Hat

MLS® #A2263484

\$459,000

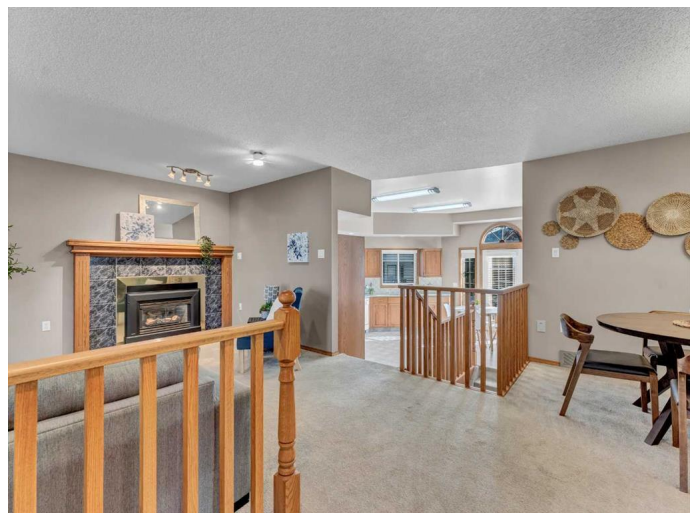
4 Bedroom, 3.00 Bathroom, 1,451 sqft
Residential on 0.12 Acres

Park View, Medicine Hat, Alberta

Welcome to 43 Prairie Court NE â€” a spacious and inviting 3+1 bedroom, 3-bathroom bungalow with a double attached garage, perfectly surrounded by nature and just minutes from Police Point Park, the River Valley, and the Medicine Hat Golf Course. The unique main floor layout features a bright front living room with large windows and a cozy gas fireplace, open to the dining area thatâ€™s ideal for family gatherings. This level also includes three bedrooms, including a comfortable primary suite with dual closets and a 3-piece ensuite. A 4-piece main bathroom, convenient main floor laundry, and access to the double attached garage complete this level.

Just a few steps down, youâ€™ll find a spacious kitchen with ample cabinetry, room for a breakfast table, and direct access to the back deck â€” the perfect spot for morning coffee or evening barbecues. The lower level is bright and welcoming, offering a huge rec and family room combination with a second gas fireplace and built-in oak entertainment centre, a fourth bedroom, a 3-piece bathroom, and a large storage room with shelving. The fully fenced and landscaped backyard includes a garden box and storage shed, creating a private outdoor retreat. With its ideal location, functional layout, and natural surroundings, this is the perfect place to call home.

Built in 1990



Essential Information

| | |
|----------------|-------------|
| MLS® # | A2263484 |
| Price | \$459,000 |
| Bedrooms | 4 |
| Bathrooms | 3.00 |
| Full Baths | 3 |
| Square Footage | 1,451 |
| Acres | 0.12 |
| Year Built | 1990 |
| Type | Residential |
| Sub-Type | Detached |
| Style | Bungalow |
| Status | Active |

Community Information

| | |
|-------------|---------------------|
| Address | 43 Prairie Court Ne |
| Subdivision | Park View |
| City | Medicine Hat |
| County | Medicine Hat |
| Province | Alberta |
| Postal Code | T1C 1R4 |

Amenities

| | |
|----------------|------------------------|
| Parking Spaces | 4 |
| Parking | Double Garage Attached |
| # of Garages | 2 |

Interior

| | |
|-------------------|--|
| Interior Features | See Remarks |
| Appliances | Central Air Conditioner, Dishwasher, Garage Control(s), Refrigerator, Stove(s), Washer/Dryer, Window Coverings |
| Heating | Forced Air, Natural Gas |
| Cooling | Central Air |
| Fireplace | Yes |
| # of Fireplaces | 2 |
| Fireplaces | Family Room, Gas, Living Room |
| Has Basement | Yes |
| Basement | Finished, Full |

Exterior

| | |
|-------------------|----------------------------------|
| Exterior Features | Other |
| Lot Description | Back Lane, Back Yard, Landscaped |
| Roof | Asphalt Shingle |
| Construction | Wood Frame |
| Foundation | Poured Concrete |

Additional Information

| | |
|----------------|-------------------|
| Date Listed | October 9th, 2025 |
| Days on Market | 2 |
| Zoning | R-LD |

Listing Details

| | |
|----------------|----------------------------|
| Listing Office | RE/MAX MEDALTA REAL ESTATE |
|----------------|----------------------------|

Data is supplied by Pillar 9â„¢ MLS® System. Pillar 9â„¢ is the owner of the copyright in its MLS® System. Data is deemed reliable but is not guaranteed accurate by Pillar 9â„¢. The trademarks MLS®, Multiple Listing Service® and the associated logos are owned by The Canadian Real Estate Association (CREA) and identify the quality of services provided by real estate professionals who are members of CREA. Used under license.